



Sessions:

Waterloo: July 19-23*

Cambridge: July 5-9

Guelph: August 16-20

* If enrolment is high, an additional session of camp may be added in Waterloo

Time:

Monday-Friday

9:00 a.m. to 12:00 noon

Fee:

\$500 per camper/week

Please bring to camp:

Snack
Water
Sunscreen
Hat

Please note: campers are not required to bring a support worker



Camp Locations:

Waterloo

500 Hallmark Drive
Waterloo, ON N2K 3P5

Cambridge

c/o Chaplin Family YMCA
250 Hespeler Road
Cambridge, ON N1R 3H3

Guelph

c/o West End Recreation Centre
21 Imperial Road South
Guelph, ON N1K 1X3

To Register, Contact:

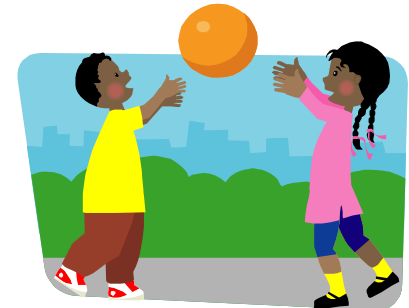
Kim Andrews
Program Manager
Firefly Therapy Services
(519) 886-8886 ext 562
1-888-372-2259 ext 562

OR, Register Online:

Website: www.kidsability.ca

Play Pals Summer Camp

Social Skills Camp for
Children Ages 6-10 with ASD



Play Pals Summer Camp

Daily Outline:

Opening Circle

Show and Tell
(campers bring in toys related to daily theme)

Facilitated Peer Play

Interactive Motor Game

Story Time

Group Recall Activity

Craft

Snack

Interactive Motor Game

Play Station Rotations

Closing Circle



**Join this social skills
summer camp for children
ages 6-10 with Autism
Spectrum Disorder! In a
play-based, supportive
environment, your child
will work on the
following goals:
greetings, eye contact,
interactive play, sharing,
and participating in
small group games and
activities.**

Expected Outcomes for Your Child

Upon registration, a brief Skill Set Checklist will be distributed for you to complete. Based on your feedback on this checklist, individualized goals will be determined for your child prior to the start of camp. Our therapy staff will support your child in making gains with these goals throughout the week. At the end of the session, a second Skill Set Checklist will be completed by the therapy staff, and provided to you on the last day. This will outline any progress made within the program, and recommendations to continue to work on these goals throughout the remainder of the summer!